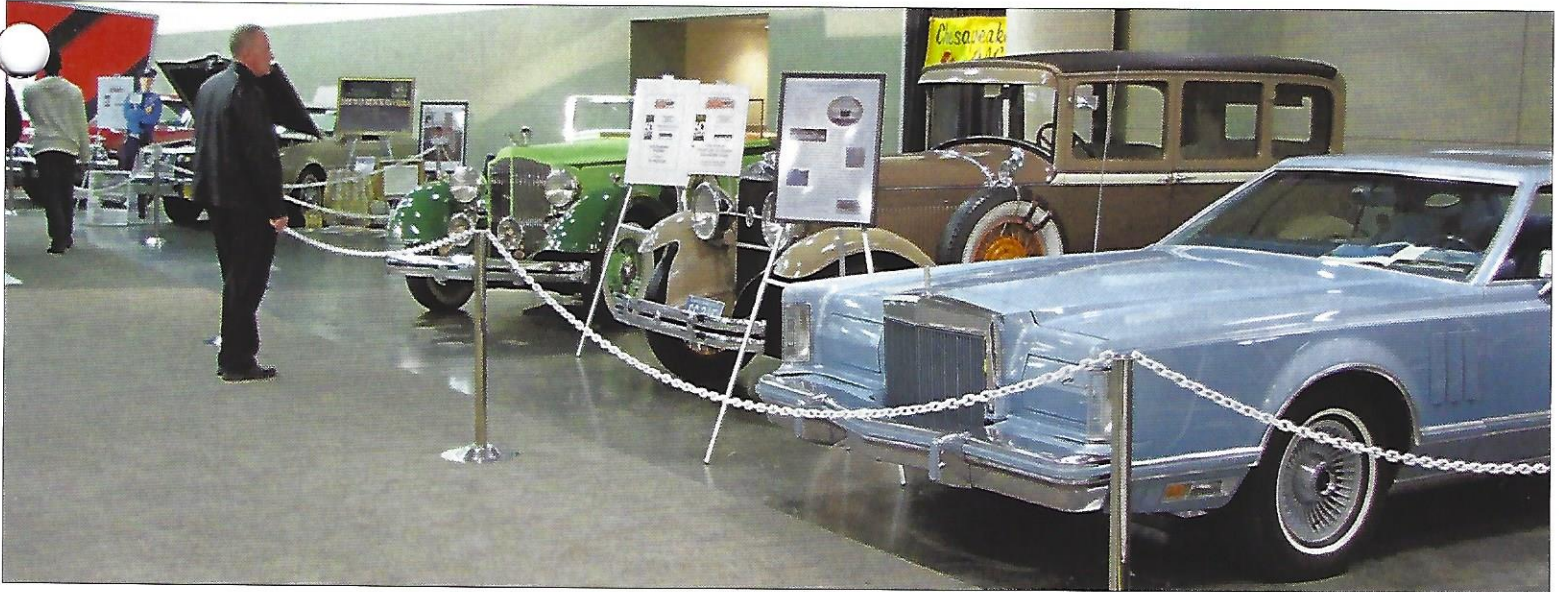


Only Five Cars At The 2017 Motor Trend Show, But They Dazzled



A lone spectator takes in the view at the 2017 Motor Trend International Auto Show at the Baltimore Convention Center, February 9-12, 2017. Our usual allotment of spaces is 8-10, this year we were cut back to five spaces. We can't complain though, because the spaces are paid for by the Baltimore Automobile Dealers Association. Members participating in the show were: Chief Judge Gene Sauter representing Charles Gillet's 1934 Packard 1101 convertible coupe; Pat Wenderoth, 1928 Studebaker President sedan; Robert Meekins, 1978 Lincoln Mark V 'Diamond Jubilee' two door coupe; Ron King, 1985 Buick Rivera W15 coupe; Tom and Judy Dawson, 1965 Chevrolet Impala Super Sport 409.--Buzz Diehl photos



Vicky Wilmer, Robert Meekins, Gary Wilmer



Robert Meekins photo

Awesome Dawson's 1965 Chevy Impala S/S '409'



Ron King, beside a photo of his late wife, 'Jacqui'

Dan and Terry Materazzi Found A Neat Storefront In 'New' Old Ellicott City

While driving through Main Street in old Ellicott City on a warm Sunday afternoon, after the flood restoration, something caught our attention. In a women's and home vintage boutique, behind the large front plate glass windows stood a gorgeous 1931 Ford Model A, a two door Phaeton with dual sidemounts. With it's 1976 AACA badge on the grille, it beckoned to passersby to come in to the store and explore.

It turns out that the store 'Sweet Elizabeth Jane' has just recently opened after relocating from their previous location that was destroyed after the flood of 2016. This building, located at 8289 Main Street, was originally the first Ford Automobile dealership in Ellicott City. The building housing Sweet Elizabeth Jane was constructed in 1921. It was named the 'Ellicott City Garage'. The following automobiles were sold during the years indicated:

- 1919-1921 Dodge and Ford Automobiles (prior to the 1921 building)
- 1921-1926 Ford Automobiles and Fordson Tractors with a repair shop
- 1926-1927 Ford & Chrysler products, Ford Tractors and a repair shop
- 1927-Unknown, Ford and Chrysler Vehicles

In 1969 the building was acquired by the Reedy Electric Company, which occupied the building until 2003. They filled in the large widows with shingles. The building now reverts to it original look with new plate glass windows (see photos at right).

Reference: *Ellicott City Times*, May 19, 1927.



Sweet Elizabeth Jane, boutique



8289 Main Street, Ellicott City



1931 Ford Phaeton Convertible with dual sidemounts

